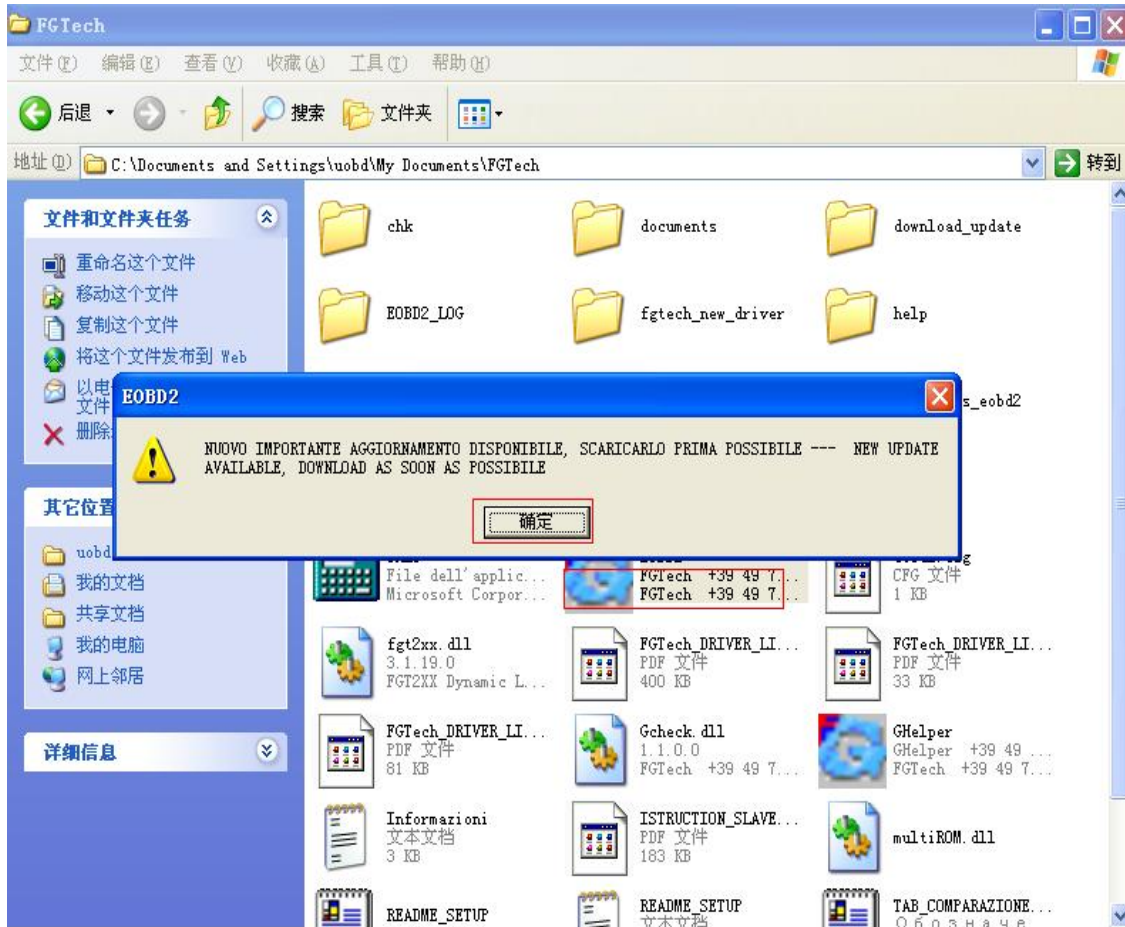
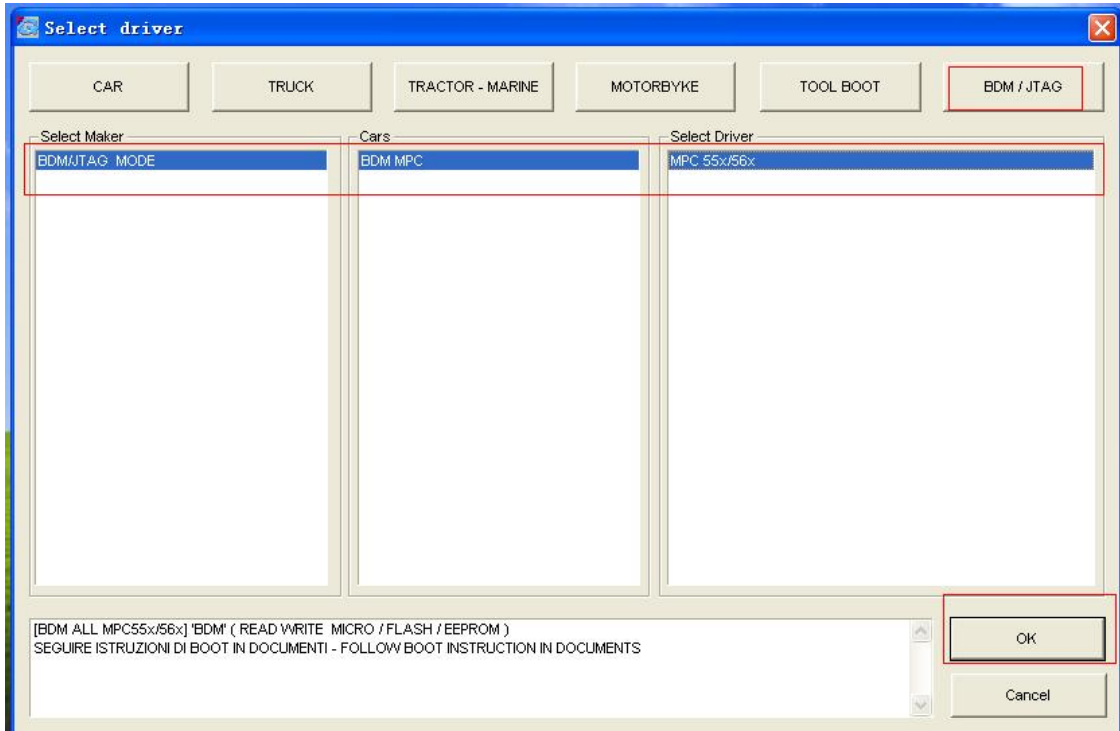


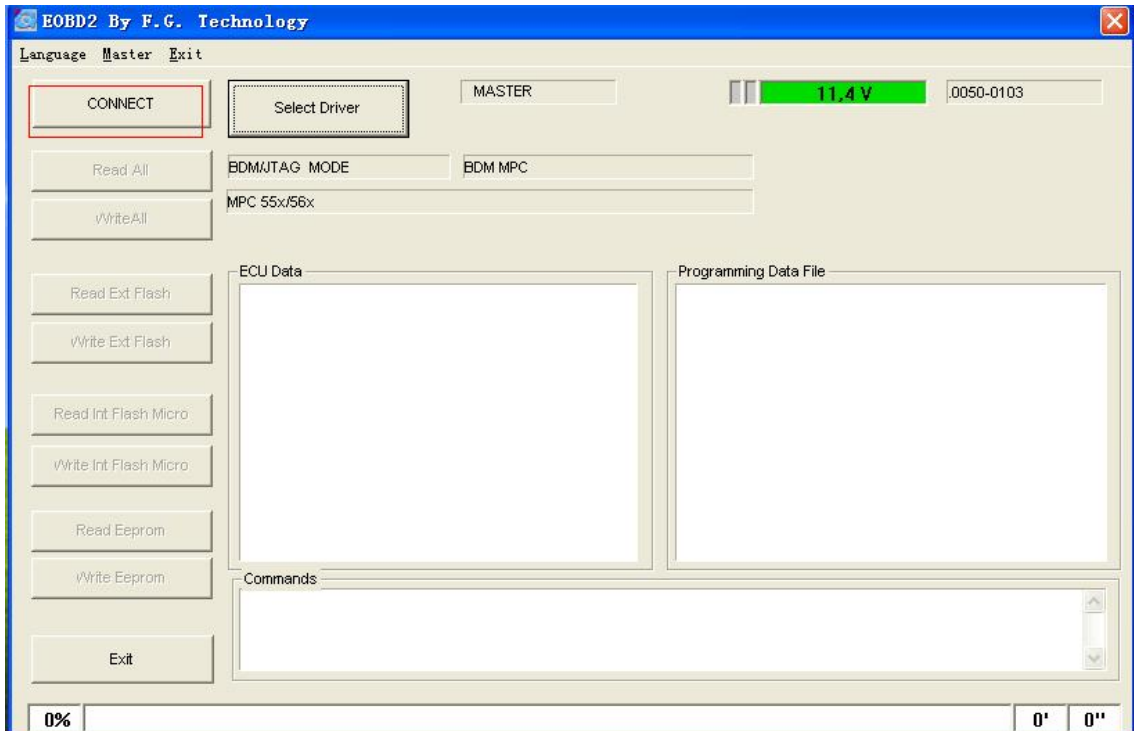
Frist ,you should open the software,and click "OK" Button



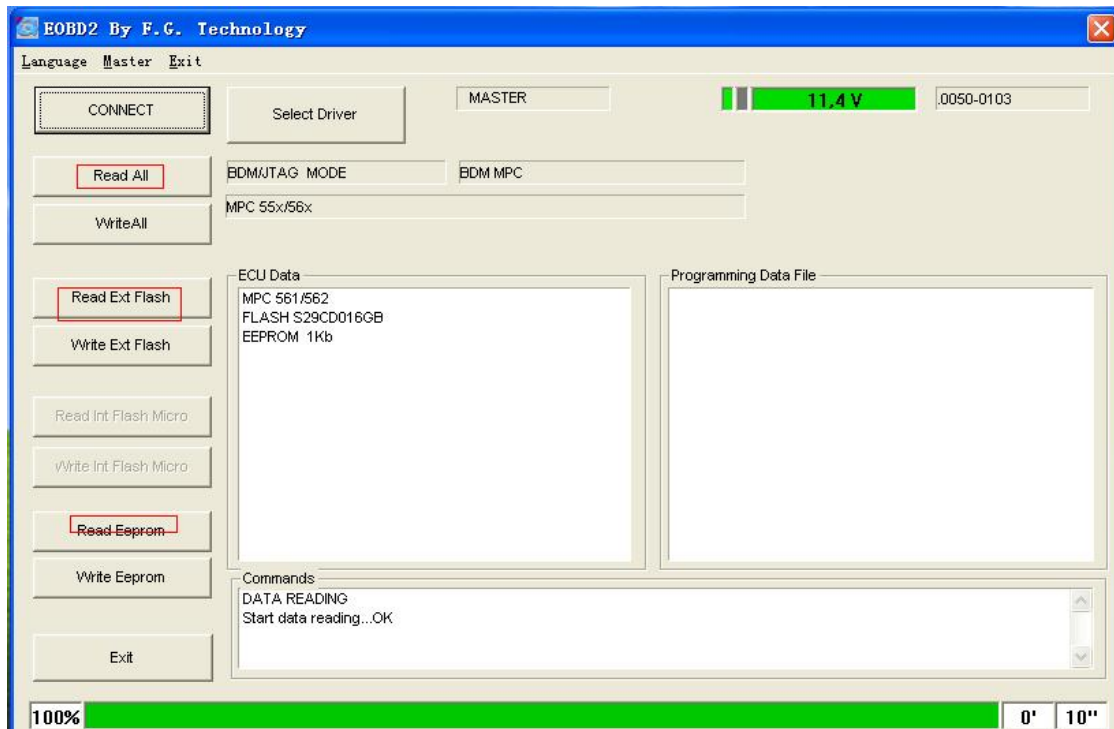
Second,at the vechile list choice the BDM/JTAG click "OK"



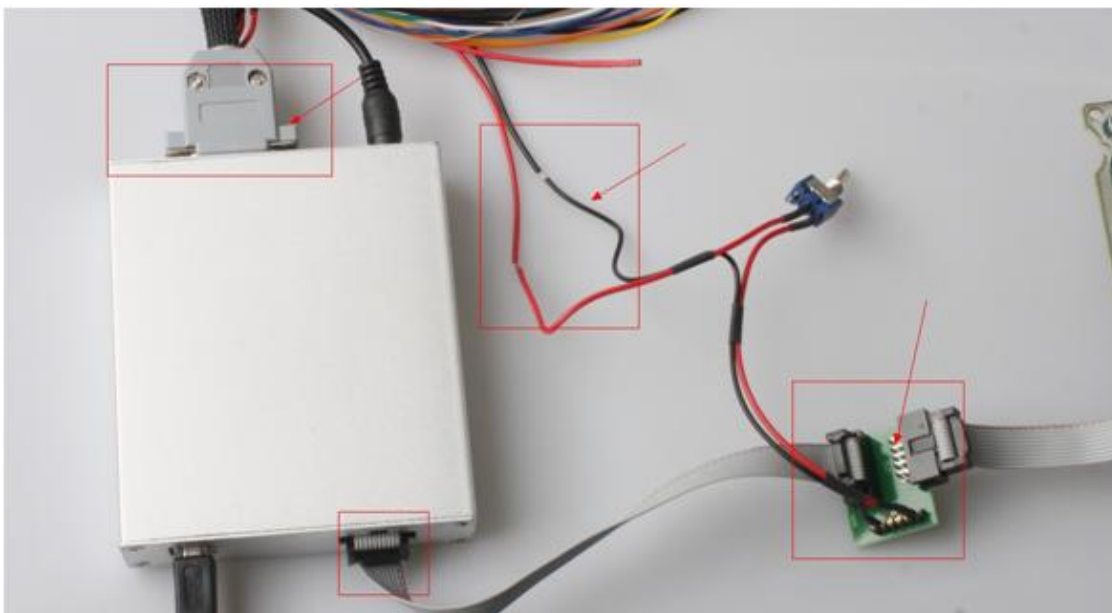
select connect



After the software and the ECU connect ,click Readall[read ext flash] [read eeprom]



need carefully connect the power adapter and the BDM connector, it can't be wrong, or will burn the ECU



ECU BDM connector :connect the right color of the cables

