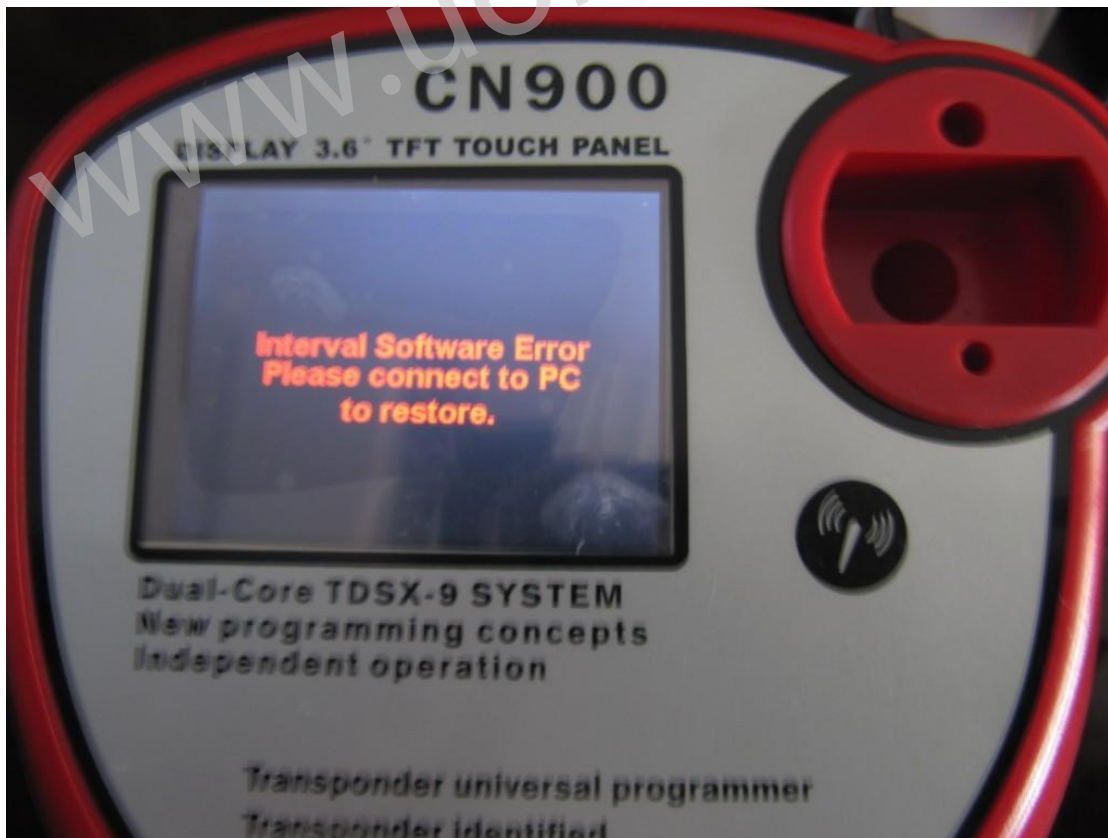
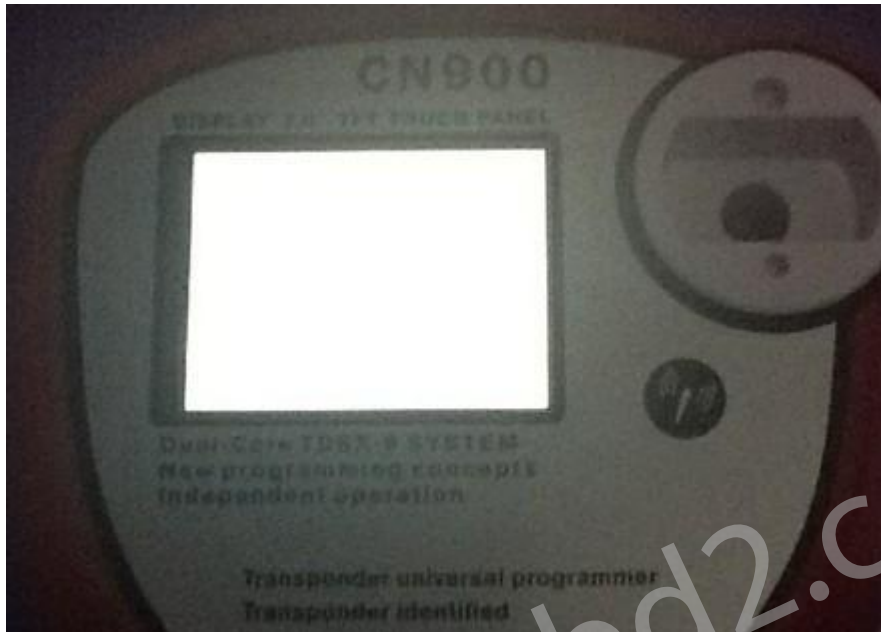


# The way to fix CN900 screen became black and white

If CN900 screen became black and white, please check follow ways how to fix it:



**Step 1:** First connect CN900 with computer and power by USB wire

**Step 2:** First go to CN900 official website: [www.cn900.net](http://www.cn900.net) and download : CN900\_LOADER V3.10

CN900\_LOADER V3.10




2011-12-05

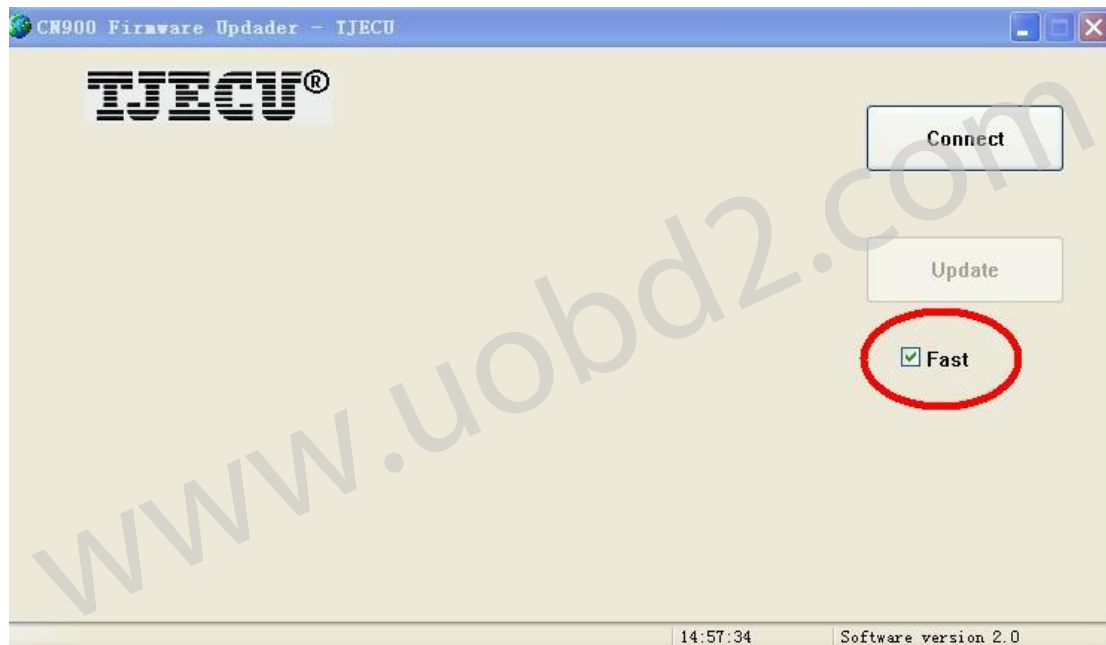
[Download](#)

**Then decompressing file and save it**

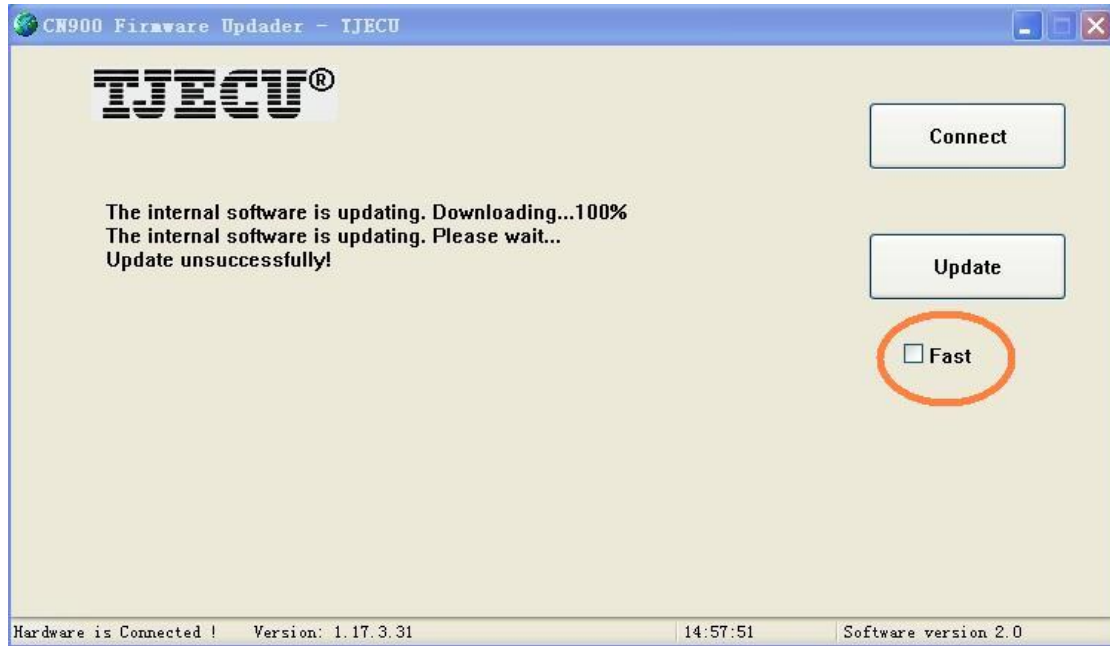


**Step 3:** Click  . Then will appear follow picture:

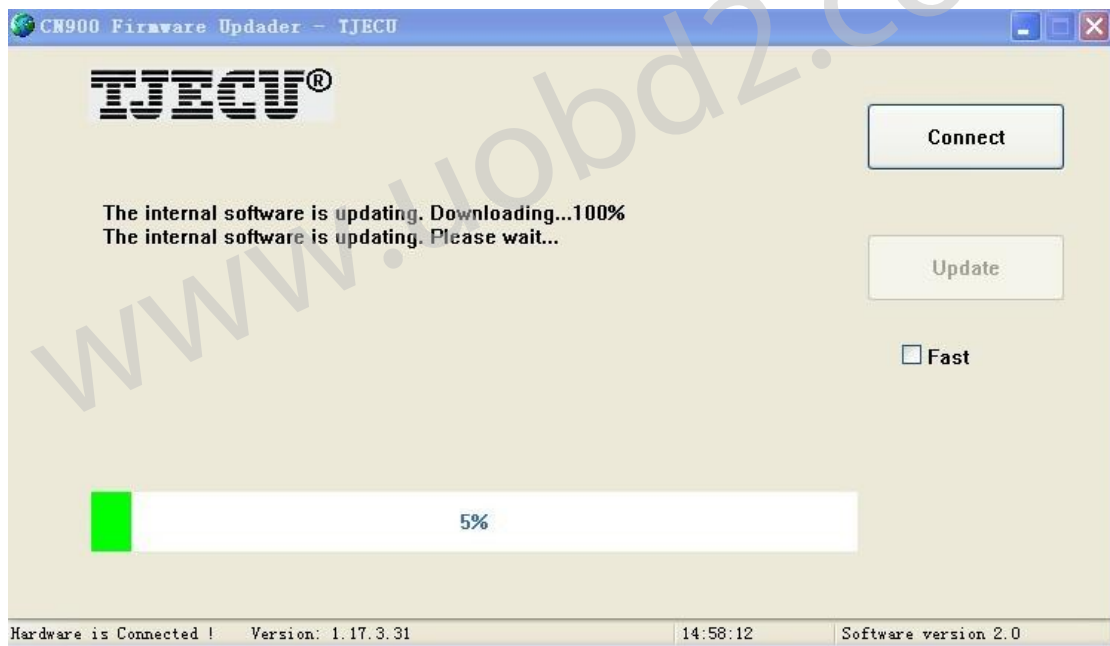
You will see in front of **Fast** there marked hook



**Step4:** Remove the Hook in front of Fast.



**Step 5:** After remove the Hook in front of Fast then press Update button. After then CN900 and update with computer together.



**Step 6:** After CN900 finished update with computer then will recover as follow:



**Remark 1:** If update one time the CN900 still not recover then try as above ways again and again till it recover.

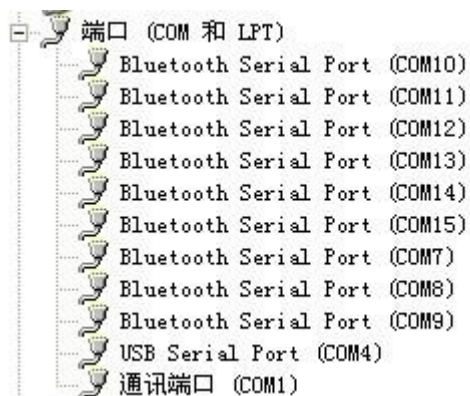
**Remark 2:** If during update CN900 and appear a window which need you choose COM port. Then you need to choose a correct COM port. If you do not know which is correct COM port then operate as follow steps:

**First:** right click my computer and choose property

**Second:** Choose Hardware.

**Third:** choose device manager

**Fourth:** find port (COM and LPT) and click + then will see follow ports




And then take CN900 USB wire out from computer then check the port (COM 和 LPT) again:




Checking the difference between connect with CN900 USB wire with computer and take out CN900 USB wire from Computer:



Then you will see when connect with CN900 USB wire with computer then will see  USB Serial Port (COM4) .

After take out CN900 USB wire from computer then  USB Serial Port (COM4) disappear.

So you need to choose  USB Serial Port (COM4) .

Notice: When choose COM port not must be  USB Serial Port (COM4) . Different computer have different case. It depend on that when you connect CN900 USB wire with computer and take out USB wire from computer which port ( COM) appear and disappear therefore that port (COM) you need to choose