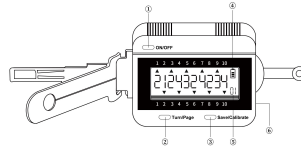


NP SMART 5 in 1 tool

[Instructions for use V1]

Thanks for your purchasing. In order to you can understand and use the tool, please read the manual, please keep it for future reference after you reading.

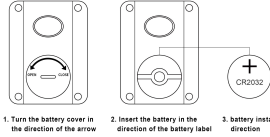


- ① On/off button ② Save pick number button ③ Lock/modify button
- ④ Battery capacity ⑤ Save pick number quantity ⑥ Android interface

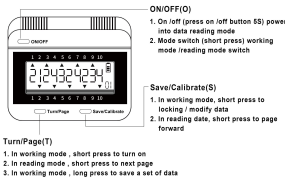
Outline

Smart 5 in 1 tool is a tool with LED indicator light, unlocking, readout, data storage, auto-calibration.

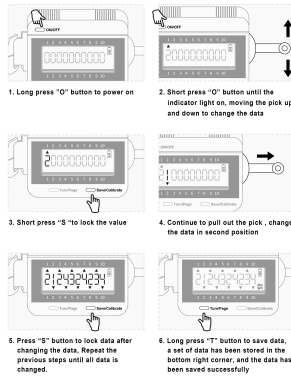
Battery Installation



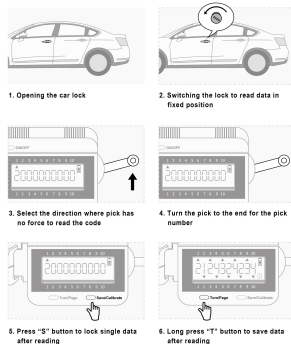
Button description



Operational Steps



Reading Pick Steps



Code Interpretation

Error code	Description	Approach
Err-01	X axis overstep the lock	Pick returns to the initial position, turn off and restart.
Err-02	Y axis overstep the lock	Pick returns to the initial position, turn off and restart.
Err-03	Save failed	Press the save button again, please check the hardware after multiple failures
Err-04	Full storage	<ol style="list-style-type: none"> long press 3S "T" button until the screen flash 3 times, so clean storage data, put and save the current data as the first storage data Don't save the current data, switch to working mode

Specifications

Display screen	LCD with white backlight board
Data bit light	Red LED with number, double instructions
Battery	DC3.3V (CR2032)
Support storage capacity	12 sets data
Power consumption	About 30-50 times
Operating temperature	-20 °C - 45 °C
Working humidity	Humidity under 95% (No condensation)
Gross weight	160g
Size	160MM*70MM*40MM

Precautions

- When the battery shows only one bar left, please use the new battery in time, avoid affecting normal use
- Please use 3.3V, CR2032 battery, cannot use other battery specifications