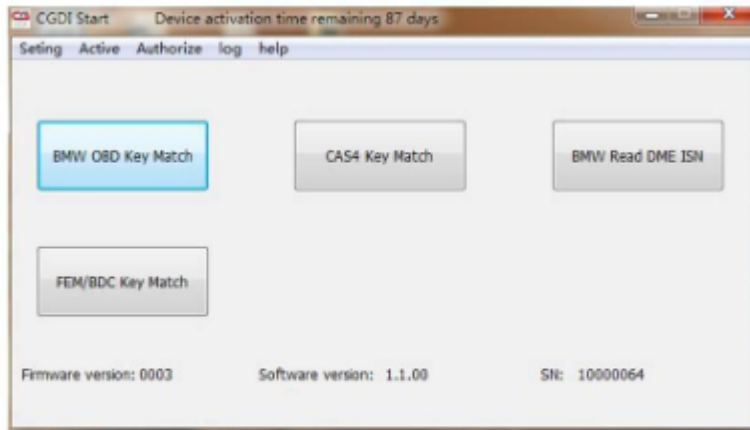


CGDI Prog Firmware Update Guide

CGDI Prog Firmware Update

Step 1. Connect CGDI Pro device to the computer, open CGDI software.

Firmware

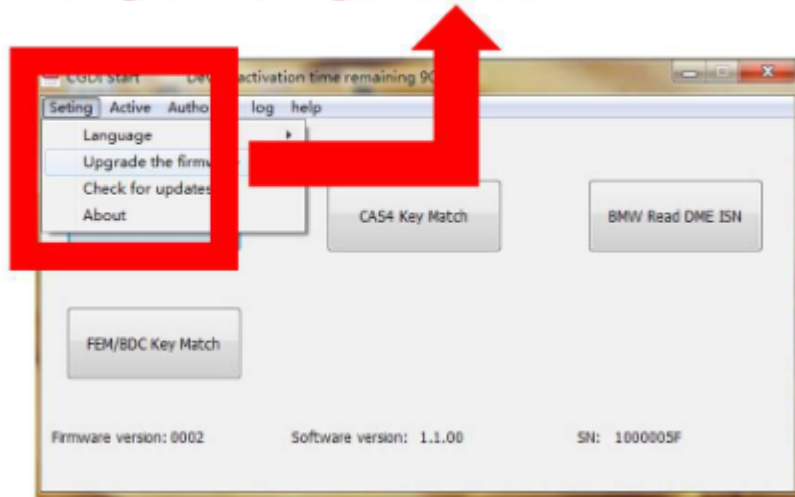


connect devices, open CGDI software

Step 2. Click on "Setting" and then "Upgrade the firmware", waiting.

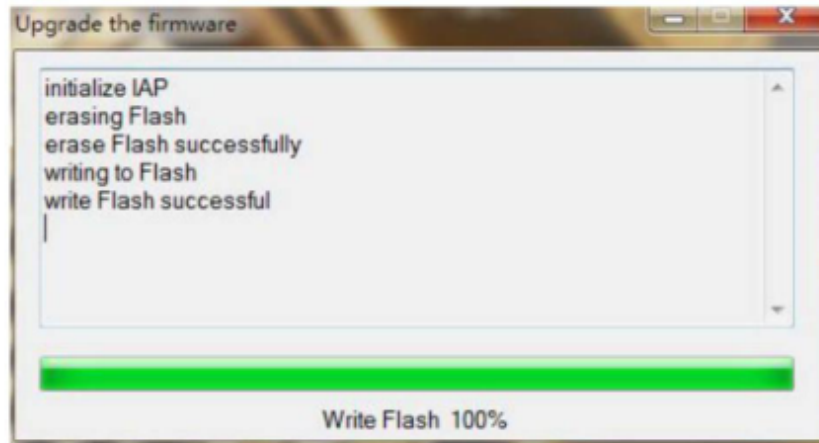
Firmware **select "Setting", click "Upgrade the firmware"**

waiting for entering next interface



Step 3. Updating...

Firmware

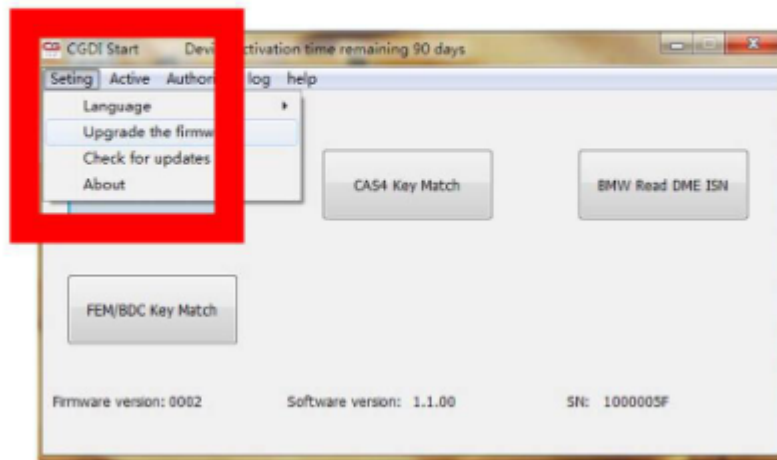


Firmware is upgrading, please do not optional operation ! ! !

Step 4. CGDI programmer firmware update successfully, again click on "Upgrade the firmware".

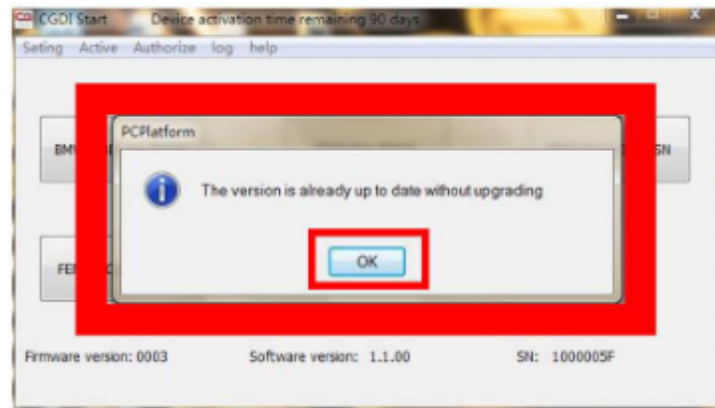
Firmware

**After Firmware updated successfully
click again "Upgrade the firmware"**



Step 5. Get message reading " The version is already up to date without upgrading".
Click on "OK".

Firmware



show "The version is already up to date without upgrading"
show: firmware updated successfully, can be working normally