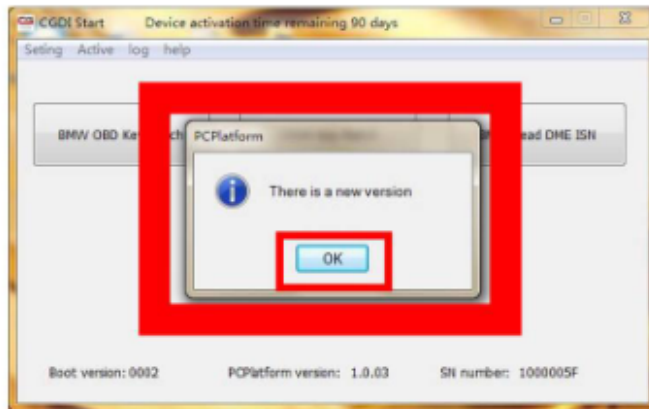


CGDI Prog software updates Guide

CGDI Prog for BMW Software Update

Step 1. Receive message " There is a new version", click on "OK"

Software

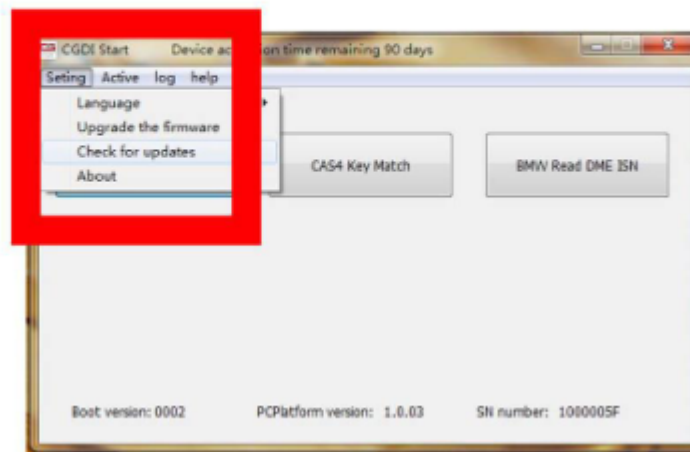


show "There is a new version" click OK

Step 2. Click on "Setting", then "Check for updates", waiting until the next dialog box appears.

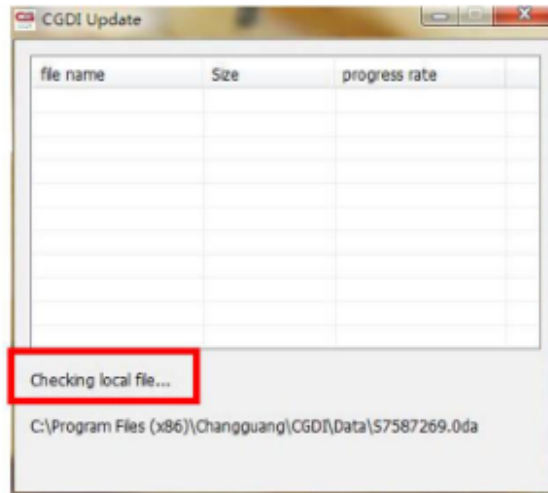
Software

**select "Setting", click "Check for updates"
waiting for entering next interface**



Step 3. Checking local file.

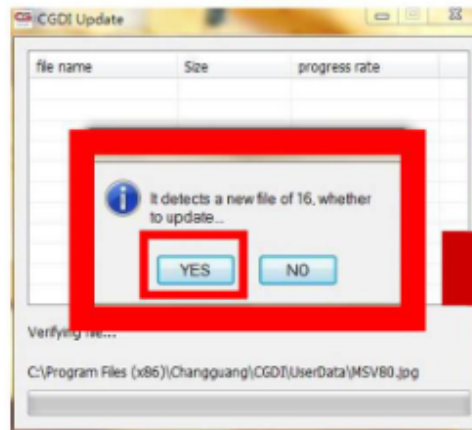
Software



checking software, pls dont operate ! ! !

Step 4. Detects a new file, click "Yes" to update.

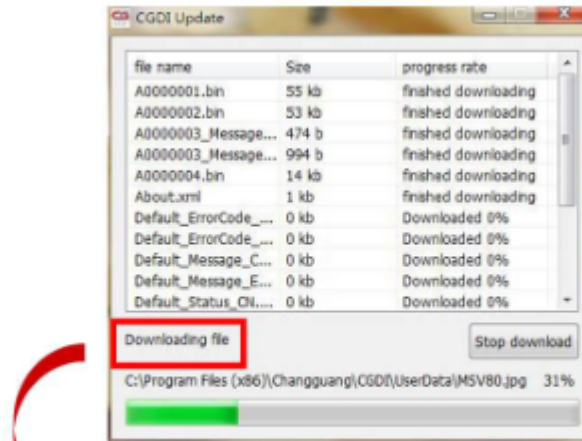
Software



finished checking, detects new file, click OK

Step 5. Downloading file.

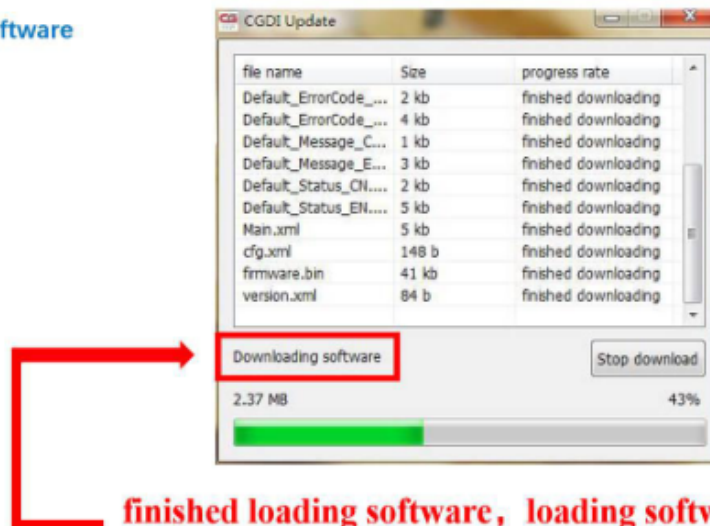
Software



downloading file,pls dont operate ! ! !

Step 6. Finish loading software.

Software



finished loading software, loading software, pls wait!

Step 7. CGDI programmer software update successfully. Ready to use the newest software.

Software

software updated successfully, can working normally

