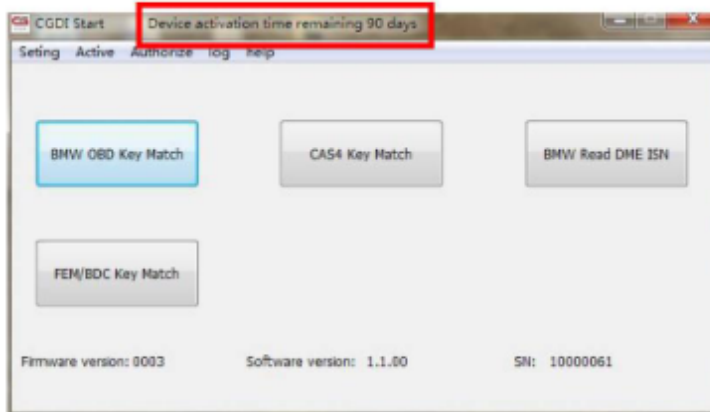


How To Activate CGDI Prog BMW

CGDI Start displays "Device activation time remaining -1 days", it means the device is not active.

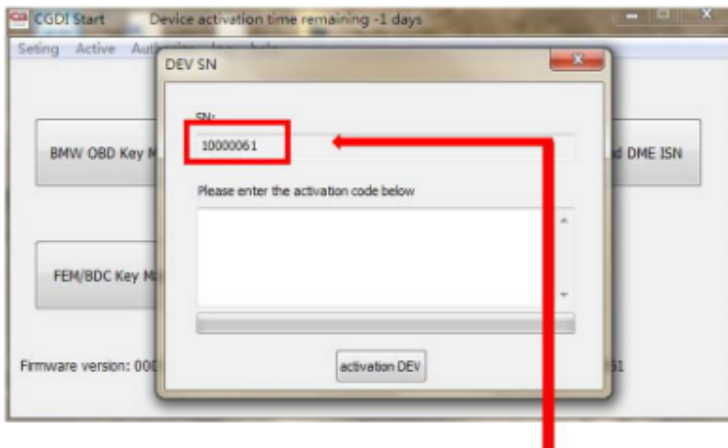
**restart software, it show "Device activation time remaining 90 day"
activated successfully, can be working normally**



Click on "Active"

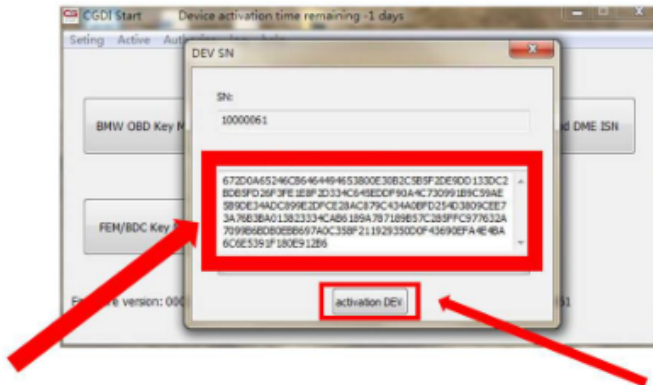


Copy the SN and send it to the supplier www.obd2shop.co.uk and not close this dialog.



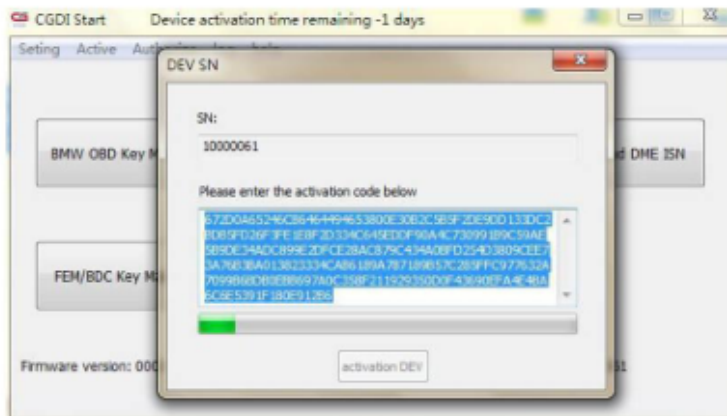
copy SN code to seller, pls dont close this interface

Input the activation code, click on "Active".



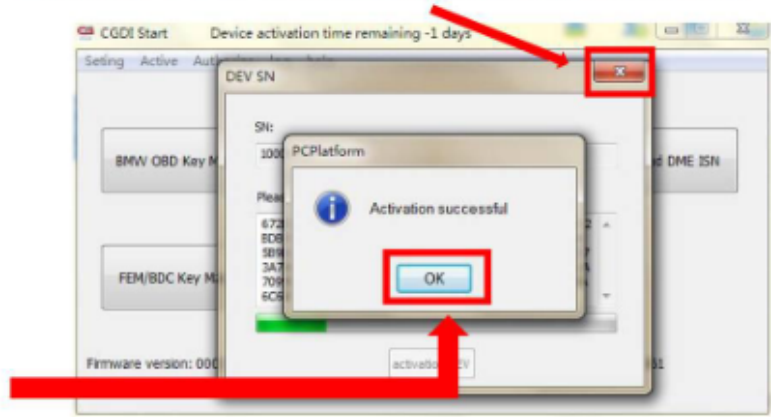
1.input 'activation code'get from seller 2.click“activation DEV”

CGDI Prog is activated, please wait until it succeed.



Devices are activated now, pls dont operate ! ! !

2.click“×”, take Out of this interface



1.show“Activation successful”, click'confirm'

Restart CGDI Start and you can see it displays "Device activation time remaining 90 days", CGDI activation succeed and CGDI Pro is working.

**restart software, it show“Device activation time remaining 90 day”
activated successfully, can be working normally**

